

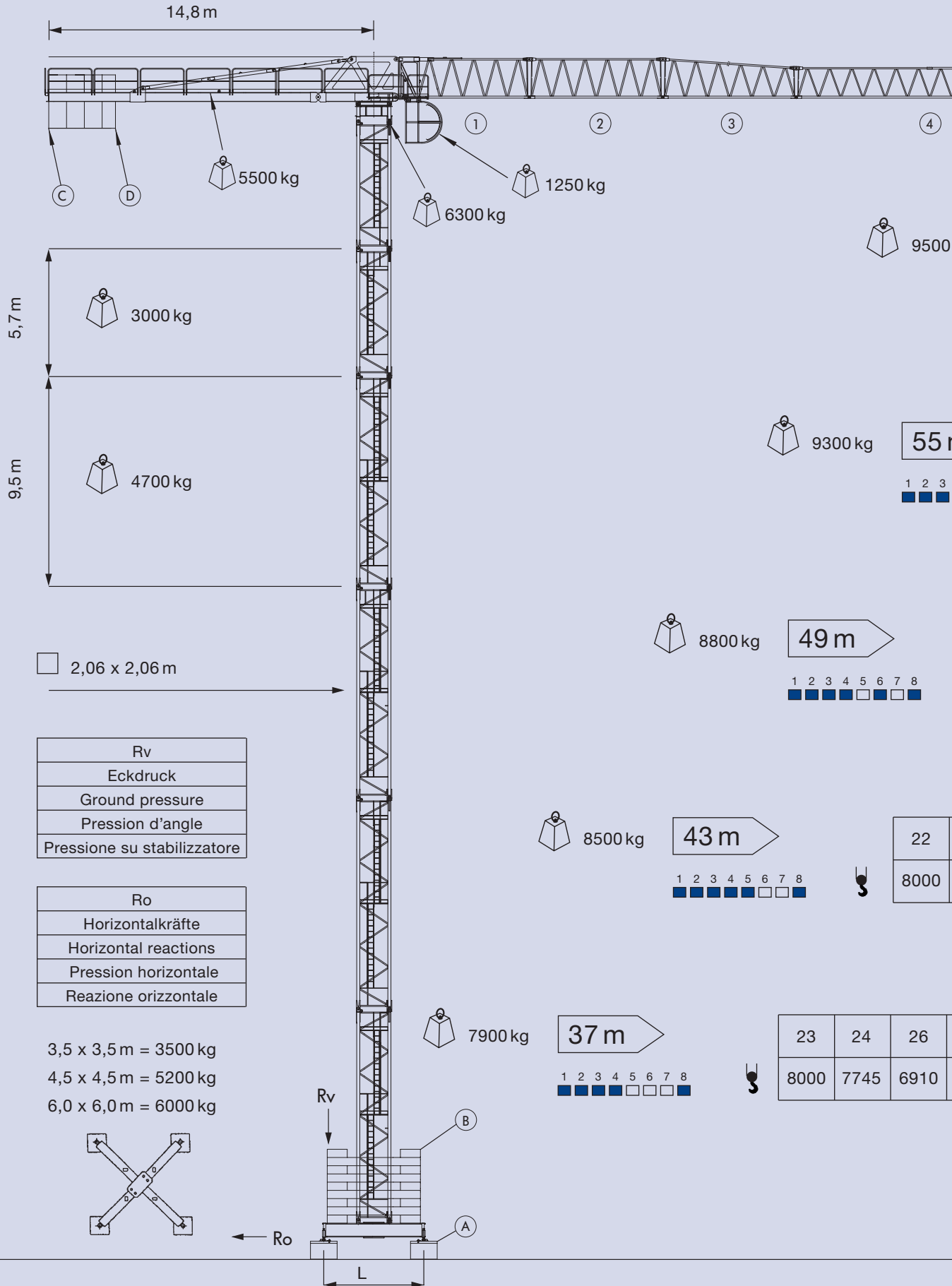
Turmdrehkran

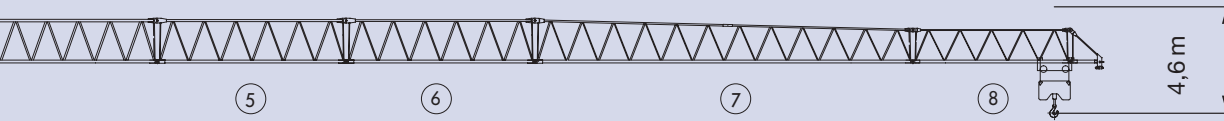
Tower crane / Grue à tour / Gru a torre

EURO SSG 130



EURO SSG 130





kg 60 m

1 2 3 4 5 6 7 8

| | | | | | | | | | |
|------|------|------|------|------|------|------|------|------|----|
| 18 | 21 | 25 | 35 | 40 | 45 | 50 | 55 | 60 | m |
| 8000 | 6721 | 5504 | 3477 | 2727 | 2429 | 2125 | 1853 | 1650 | kg |

m

4 5 6 7 8

| | | | | | | | | | |
|------|------|------|------|------|------|------|------|------|----|
| 19 | 21 | 25 | 30 | 35 | 40 | 45 | 50 | 55 | m |
| 8000 | 7341 | 5472 | 4638 | 3601 | 2928 | 2611 | 2289 | 2000 | kg |

| | | | | | | | | | |
|------|------|------|------|------|------|------|------|------|----|
| 20 | 23 | 25 | 30 | 35 | 40 | 43 | 45 | 49 | m |
| 8000 | 6833 | 5943 | 4912 | 3948 | 3370 | 2936 | 2778 | 2500 | kg |

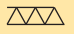

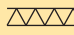

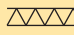
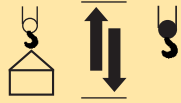

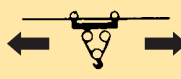

| | | | | | | | | |
|------|------|------|------|------|------|------|------|----|
| 24 | 25 | 30 | 33 | 35 | 38 | 40 | 43 | m |
| 7484 | 6979 | 5675 | 4956 | 4631 | 4048 | 3812 | 3500 | kg |







| | | | | | | |
|------|------|------|------|------|------|----|
| 28 | 30 | 32 | 34 | 36 | 37 | m |
| 6108 | 5877 | 5272 | 4961 | 4645 | 4500 | kg |

Hakenhöhe
Height under hook
Hauteur s/crochet
Altezza al gancio

- 60 m
- 55 m
- 50 m
- 45 m
- 39 m
- 35 m
- 30 m
- 26 m
- 23 m

EURO SSG 130

| | | | | | | | |
|--|--------|---|------|------|--|------|------|
| Tragkraft Capacity Charge Pesi | kg | 8000 | 4500 | 3500 | 2500 | 2000 | 1650 |
| Ausladung/Radius/Portée/Sbraccio | | | | | | | |
|  | 37,0 m | m | 23 | 37 | | | |
|  | 43,0 m | m | 22 | | 43 | | |
|  | 49,0 m | m | 20 | | | 49 | |
|  | 55,0 m | m | 19 | | | | 55 |
|  | 60,0 m | m | 18 | | | | 60 |
|  FU-Steuerung/Inverter P = 45 kW | |  | | | 8 m/min 8000 kg 25 m/min 6000 kg 50 m/min 3500 kg 75 m/min 2000 kg 100 m/min 1500 kg | | |
|  FU-Steuerung/Inverter P = 4 kW | | | | | 8 – 25 – 60 – 100 m/min | | |
|  FU-Steuerung/Inverter P = 2 x 4,2 kW | | | | | 0,1 – 0,3 – 0,5 – 0,7 1/min | | |
| Spannung Voltage Voltage Voltaggio | | | | | 400 V – 50 Hz | | |
| Anschlusswert Total motor output Puissance totale Potenza elettrica complessiva | | | | | 57 kW – Absicherung 125 A | | |

| Ausleger Radius Portée Sbraccio | Gegengewichte Counter-jib ballast Contre-poids Contrappeso | | |  |
|--|---|-------------|----------|--|
| | C = 4000 kg | D = 1500 kg | Total | |
| 60 m | 3 x C | 2 x D | 15000 kg |  |
| 55 m | 3 x C | 2 x D | 15000 kg |  |
| 49 m | 3 x C | 1 x D | 13500 kg |  |
| 43 m | 3 x C | 1 x D | 13500 kg |  |
| 37 m | 3 x C | | 12000 kg |  |

EURO SSG 130

| Abstützung Base dimension Ecartement de voie Scartamento | | | | L = 3,5 x 3,5 m | | | | Stationär Stationary Sur pieds de scellement Stazionaria | |
|---|--|-------|--------|-----------------|---------|---|--------|---|--|
| Hakenhöhe ¹ Height under hook Hauteur s/crochet Altezza al gancio | Grundballast Central ballast Lest de base Zavorra di base | | | | | Kräfte Reactions Pression d'angle Reazioni | | | |
| H | A | | | B | A+B | Rv | Ro | | |
| 35,7 m | 4 | 3,4 t | 13,6 t | 96 t | 109,6 t | 109,7 t | 13,6 t | | |
| 30 m | 4 | 3,4 t | 13,6 t | 72 t | 85,6 t | 90,5 t | 12,2 t | | |
| 22,4 m | 4 | 3,4 t | 13,6 t | 68 t | 81,6 t | 76,1 t | 10,3 t | | |
| 16,7 m | 4 | 3,4 t | 13,6 t | 68 t | 81,6 t | 67,8 t | 9,2 t | | |

| Abstützung Base dimension Ecartement de voie Scartamento | | | | L = 4,5 x 4,5 m | | | | Stationär Stationary Sur pieds de scellement Stazionaria | |
|---|--|-------|--------|-----------------|---------|---|--------|---|--|
| Hakenhöhe ¹ Height under hook Hauteur s/crochet Altezza al gancio | Grundballast Central ballast Lest de base Zavorra di base | | | | | Kräfte Reactions Pression d'angle Reazioni | | | |
| H | A | | | B | A+B | Rv | Ro | | |
| 50,9 m | 4 | 3,4 t | 13,6 t | 128 t | 141,6 t | 133,1 t | 16,4 t | | |
| 45,2 m | 4 | 3,4 t | 13,6 t | 88 t | 101,6 t | 108,8 t | 14,4 t | | |
| 41,4 m | 4 | 3,4 t | 13,6 t | 76 t | 89,6 t | 98,4 t | 13,4 t | | |
| 35,7 m | 4 | 3,4 t | 13,6 t | 56 t | 69,6 t | 81,8 t | 11,7 t | | |
| 30 m | 4 | 3,4 t | 13,6 t | 40 t | 53,6 t | 67,7 t | 10,2 t | | |
| 22,4 m | 4 | 3,4 t | 13,6 t | 36 t | 49,6 t | 57,5 t | 8,5 t | | |

| Abstützung Base dimension Ecartement de voie Scartamento | | | | L = 6,0 x 6,0 m | | | | Stationär Stationary Sur pieds de scellement Stazionaria | |
|---|--|-------|--------|-----------------|---------|---|--------|---|--|
| Hakenhöhe ¹ Height under hook Hauteur s/crochet Altezza al gancio | Grundballast Central ballast Lest de base Zavorra di base | | | | | Kräfte Reactions Pression d'angle Reazioni | | | |
| H | A | | | B | A+B | Rv | Ro | | |
| 60,4 m | 4 | 3,4 t | 13,6 t | 128 t | 141,6 t | 132 t | 19,9 t | | |
| 50,9 m | 4 | 3,4 t | 13,6 t | 76 t | 89,6 t | 99,4 t | 16,6 t | | |
| 45,2 m | 4 | 3,4 t | 13,6 t | 48 t | 61,6 t | 81,7 t | 14,7 t | | |
| 39,5 m | 4 | 3,4 t | 13,6 t | 32 t | 45,6 t | 68,4 t | 13,1 t | | |
| 35,7 m | 4 | 3,4 t | 13,6 t | 24 t | 37,6 t | 61,3 t | 11,8 t | | |
| 30 m | 4 | 3,4 t | 13,6 t | 16 t | 29,6 t | 51,6 t | 10,5 t | | |
| 26,2 m | 4 | 3,4 t | 13,6 t | 12 t | 25,6 t | 46,6 t | 9,6 t | | |

¹Weitere Turmkonfigurationen nach Absprache möglich.
¹Other tower configurations are available upon request.

¹Autres configurations de tour possible sur demande.
¹Ulteriori configurazioni di torre disponibili su richiesta.

Standorte Schweiz:

Conducta AG
Stegackerstrasse 6
CH-8409 Winterthur
Telefon +41 (0)52 234 51 51
info@conducta.ch

Conducta AG
Riedbachstrasse 21 2
CH-3020 Bern
Telefon +41 (0)31 858 51 00
bern@conducta.ch

Conducta SA
Ch. de la Clopette 30
CH-1040 Echallens
Téléphone +41 (0)21 886 34 00
contact@conducta.ch

Conducta AG
Industriestrasse 4
CH-7203 Trimmis
Telefon +41 (0)81 322 53 33
trimmis@conducta.ch

Werner Fercher AG
CH-Lalden VS
Telefon +41 (0)27 946 40 21

Weitere Standorte finden Sie unter: www.conducta.ch

Standort Deutschland:

Conducta GmbH
Breitenbachstrasse 1
D-82538 Geretsried 1
Telefon +49 (0)81 71 2196-0
info@conducta.de

Standort Italien:

Conducta S.R.L.
Macchine Edili
Via Liguria 11
I-36015 Schio (VI)
Telefono +39 (0)445 576 229