

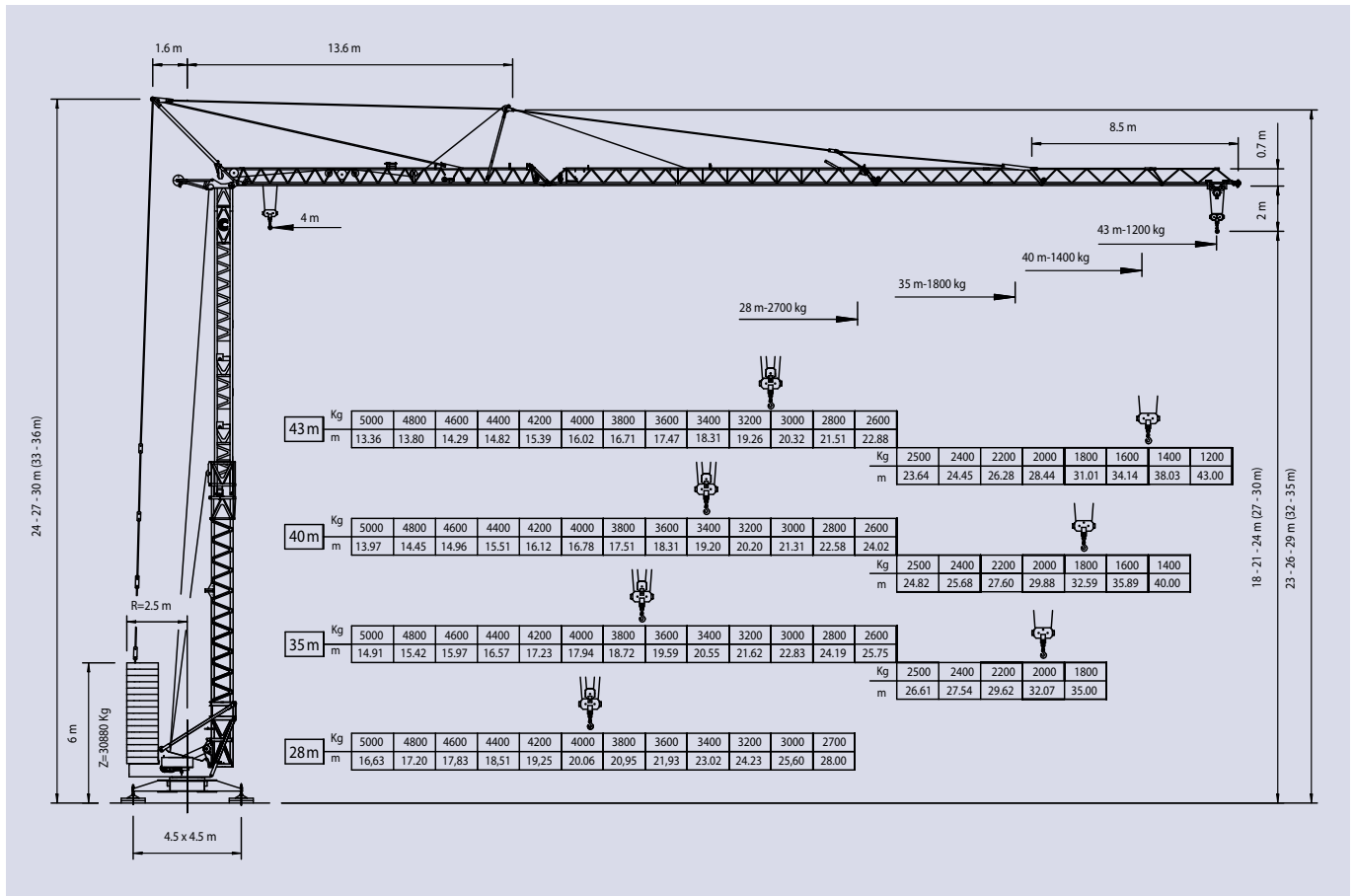
## Schnelleinsatzkran

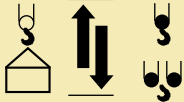



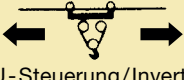

Self-erecting crane / Grue à montage rapide /  
Gru a montaggio rapido

### EURO 4312



# EURO 4312

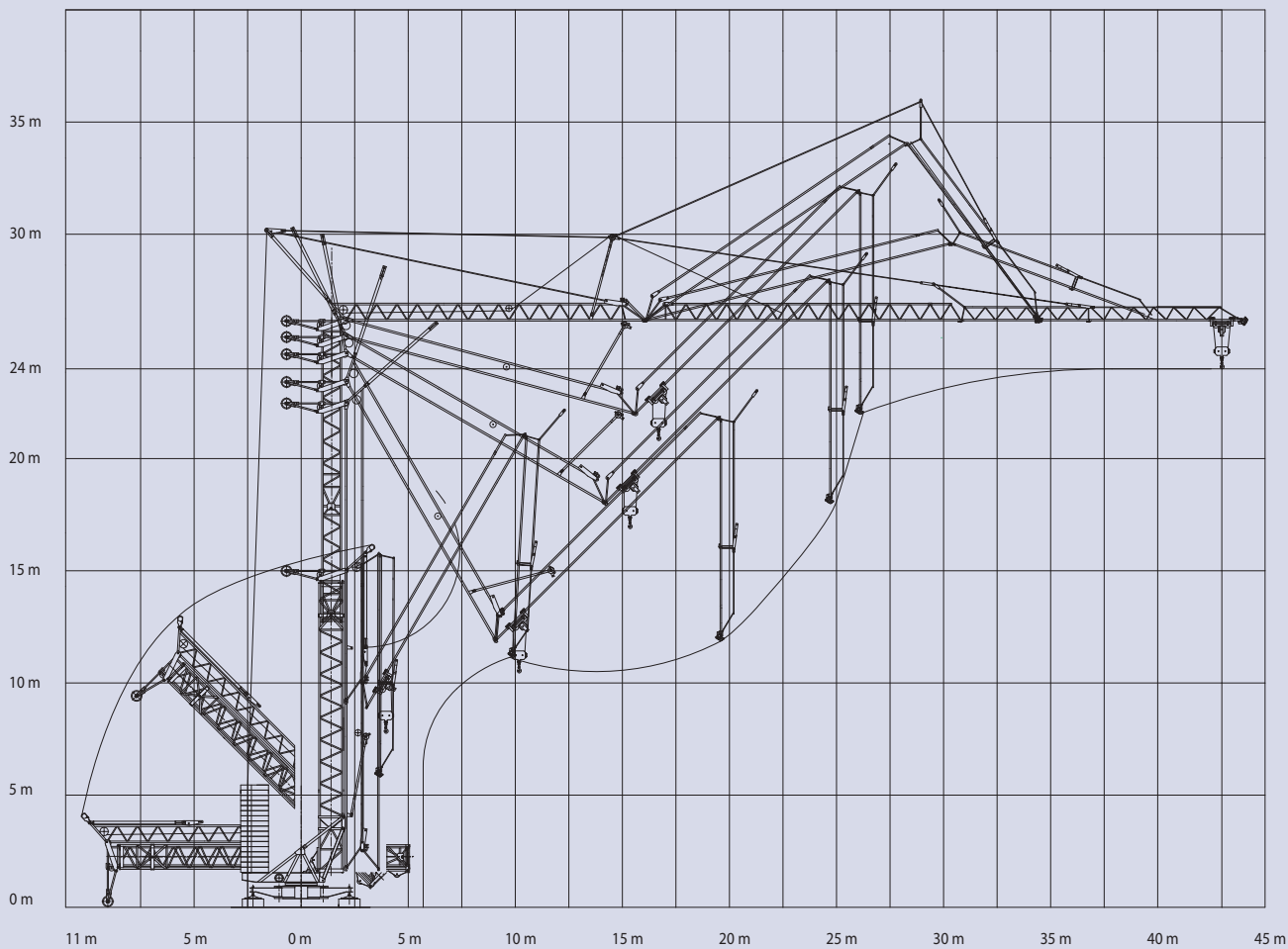


Ausleger in Horizontalstellung / Jib in horizontal position / Flèche horizontale / Braccio orizzontale								
Tragkraft / Capacity / Charge / Pesi	kg		5000	2700	2500	1800	1400	1200
△△	28,0 m	m	16,63	28,0				
△△△	35,0 m	m	14,91		26,61	35,0		
△△△△	40,0 m	m	13,97		24,82		40,0	
△△△△△	43,0 m	m	13,36		23,64			43,0
 FU-Steuerung/Inverter	 50 m/min  37 m/min  5-25 m/min	1600 kg		1900 kg				
		3200 kg		3800 kg		5000 kg		
 FU-Steuerung/Inverter	15-30-60 m/min							
	 FU-Steuerung/Inverter	0,2-0,5-0,8 1/min						

Hakenhöhe height under hook hauteur s/crochet altezza al gancio	18/21/24 m 27/30 m
Abstützung base dimension ecartement de voie scartamento	4,5 x 4,5 m
Drehradius slewing radius rayon de giration arrière raggio di rotazione	2,5 m
Konstruktionsgewicht dead weight poids de la grue peso della gru	18,1 t
Gegenballast counter weight contre poids zavorra contrappeso	30,88 t
Eckdruck ground pressure pression d'angle pressione su stabilizzatore	max. 32 t
Gesamt - Motorenleistung total motor output puissance totale des moteurs forza motrice totale	23 kW
Kabelquerschnitt cross section of cable section du cable sezione del cavo sottogomma	4 x 16 mm <sup>2</sup>

# EURO 4312

## Montageablauf / Erection procedure / Descriptif de montage / Diagramma di montaggio



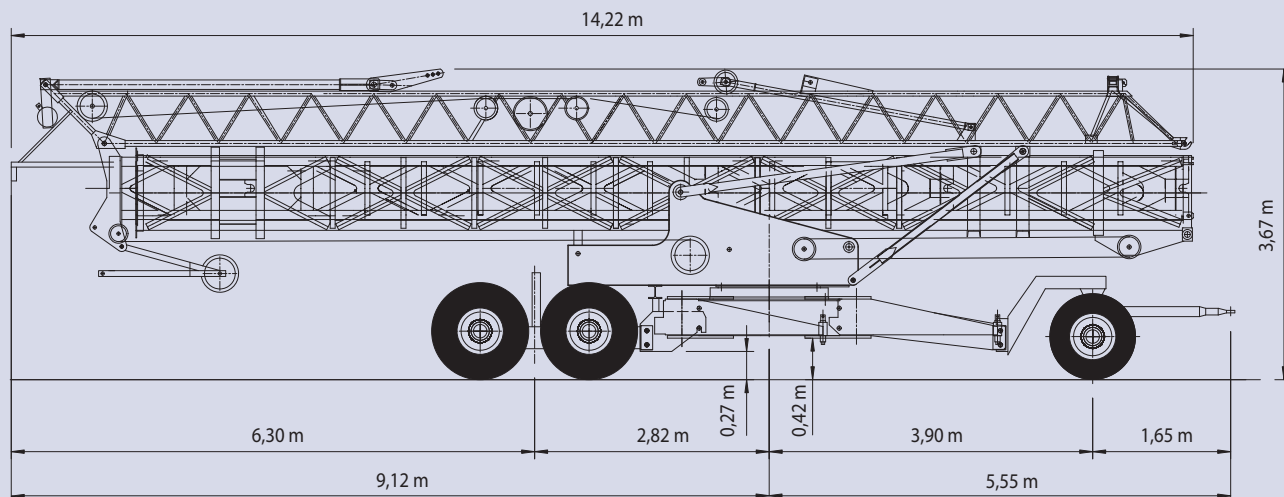
Richtlinie 2000/14 EG  
für den Schall-Leistungspegel

Instruction EC 2000/14  
on noise level

Directive CE 2000/14  
sur le niveau acoustique

Direttive CE 2000/14  
sul livello acustico

## Transport / Transport / Transport / Trasporto



## Standorte Schweiz:

Conducta AG  
Stegackerstrasse 6  
CH-8409 Winterthur  
Telefon +41 (0)52 234 51 51  
info@conducta.ch

Conducta AG  
Riedbachstrasse 212  
CH-3020 Bern  
Telefon +41 (0)31 858 51 00  
bern@conducta.ch

Conducta SA  
Ch. de la Clopette 30  
CH-1040 Echallens  
Téléphone +41 (0)21 886 34 00  
contact@conducta.ch

Conducta AG  
Industriestrasse 4  
CH-7203 Trimmis  
Telefon +41 (0)81 322 53 33  
trimmis@conducta.ch

Werner Fercher AG  
CH-Lalden VS  
Telefon +41 (0)27 946 40 21

**Weitere Standorte finden Sie unter: [www.conducta.ch](http://www.conducta.ch)**

## Standort Deutschland:

Conducta GmbH  
Breitenbachstrasse 1  
D-82538 Geretsried 1  
Telefon +49 (0)81 71 2196-0  
info@conducta.de

## Standort Italien:

Conducta S.R.L.  
Macchine Edili  
Via Liguria 11  
I-36015 Schio (VI)  
Telefono +39 (0)445 576 229