

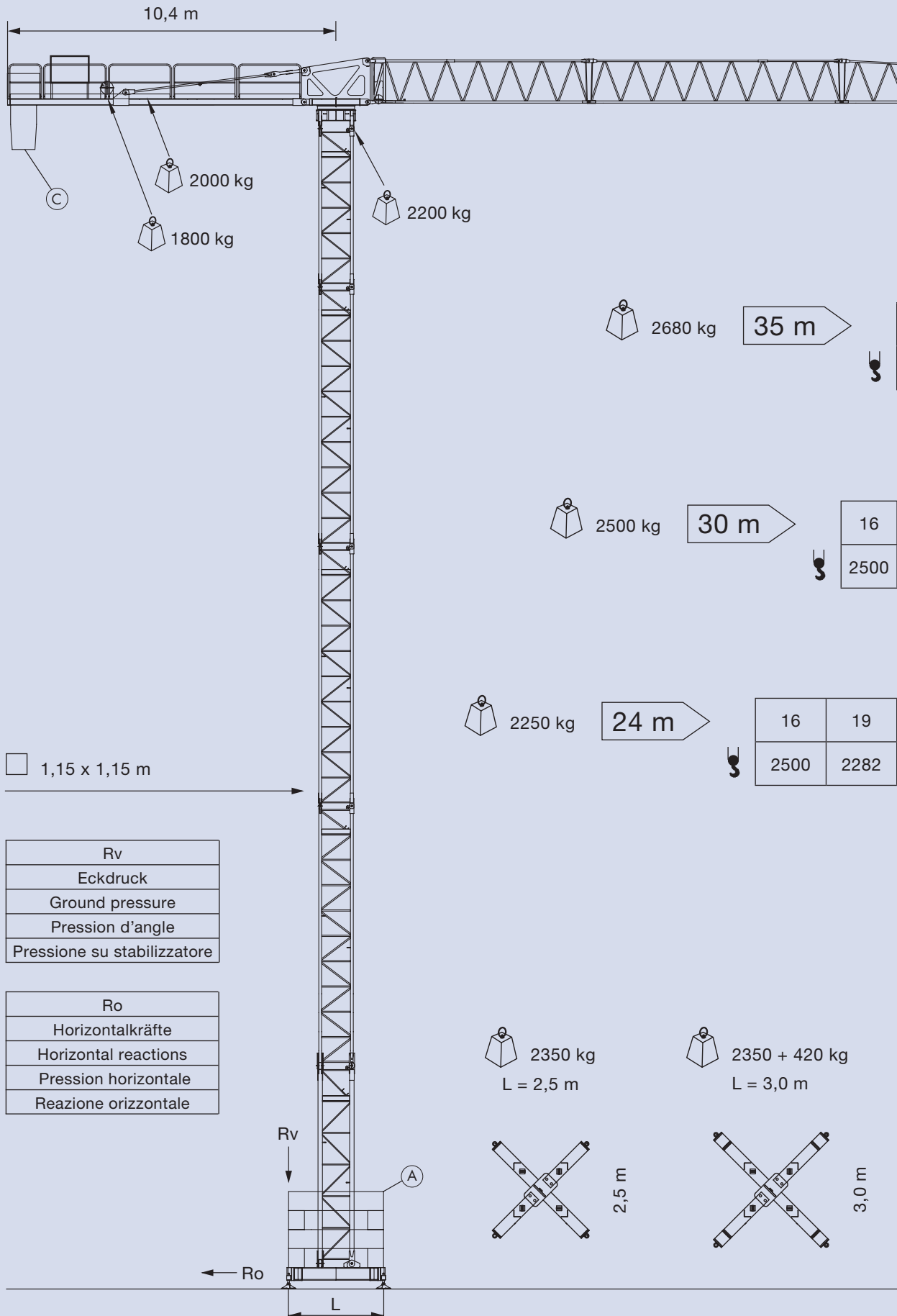
Turmdrehkran

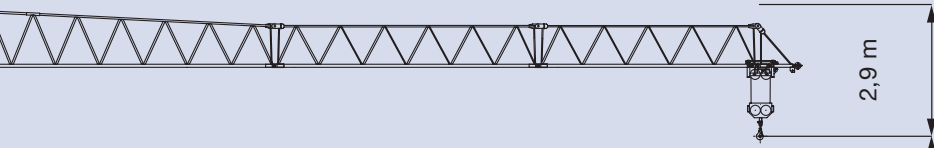
Tower crane / Grue à tour / Gru a torre

EURO SSG 35



EURO SSG 35





16	20	22	25	28	30	32	33	34	35	m
2500	1920	1721	1485	1302	1201	1113	1073	1035	1000	kg

20	22	25	26	27	28	29	30	m
2071	1858	1605	1534	1469	1409	1352	1300	kg

20	21	22	23	24	m
2153	2037	1932	1837	1750	kg

Hakenhöhe
Height under hook
Hauteur s/crochet
Altezza al gancio


36 m

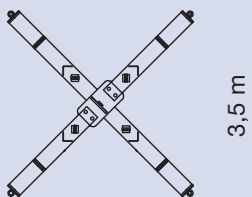
31 m

28 m

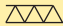
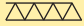
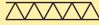




23 m


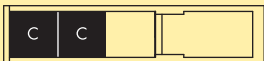


20 m

 2350 + 700 kg
L = 3,5 m



EURO SSG 35

Tragkraft Capacity Charge Pesi	kg	2500	1700	1300	1000
Ausladung/Radius/Portée/Sbraccio					
	24,0 m	m	17	24	
	30,0 m	m	17		30
	35,0 m	m	16		35
 FU-Steuerung/Inverter P = 11 kW				6,2 m/min 25 m/min 50 m/min	2500 kg 2000 kg 1400 kg
 FU-Steuerung/Inverter P = 4 kW				12-25-50 m/min	
 FU-Steuerung/Inverter P = 4 kW				0,2-0,6-0,9 1/min	
Spannung Voltage Voltage Voltaggio				400 V – 50 Hz	
Anschlusswert Total motor output Puissance totale Potenza elettrica complessiva				19 kW – Absicherung 63 A	

Ausleger Radius Portée Sbraccio	Gegengewichte Counter-jib ballast Contre-poids Contrappeso		
	1500 kg	Total	
35 m	3 x 1500 kg	4500 kg	
30 m	2 x 1500 kg	3000 kg	
24 m	2 x 1500 kg	3000 kg	

EURO SSG 35

Abstützung Base dimension Ecartement de voie Scartamento		L = 2,5 x 2,5 m		Stationär Stationary Sur pieds de scellement Stazionaria	
Hakenhöhe Height under hook Hauteur s/crochet Altezza al gancio	Grundballast Central ballast Lest de base Zavorra di base			Kräfte Reactions Pression d'angle Reazioni	
H	A			Rv	Ro
36 m	36	2,0 t	72 t	46,6 t	5,4 t
31 m	30	2,0 t	60 t	40,7 t	4,5 t
28 m	26	2,0 t	52 t	37,1 t	4,2 t
23 m	20	2,0 t	40 t	31,6 t	3,6 t
20 m	18	2,0 t	36 t	29,2 t	3,3 t

Abstützung Base dimension Ecartement de voie Scartamento		L = 3,0 x 3,0 m		Stationär Stationary Sur pieds de scellement Stazionaria	
Hakenhöhe Height under hook Hauteur s/crochet Altezza al gancio	Grundballast Central ballast Lest de base Zavorra di base			Kräfte Reactions Pression d'angle Reazioni	
H	A			Rv	Ro
36 m	28	2,0 t	56 t	38,9 t	5,4 t
31 m	22	2,0 t	44 t	33,4 t	4,5 t
28 m	20	2,0 t	40 t	31,1 t	4,2 t
23 m	16	2,0 t	32 t	27,0 t	3,6 t
20 m	14	2,0 t	28 t	24,8 t	3,3 t

Abstützung Base dimension Ecartement de voie Scartamento		L = 3,5 x 3,5 m		Stationär Stationary Sur pieds de scellement Stazionaria	
Hakenhöhe Height under hook Hauteur s/crochet Altezza al gancio	Grundballast Central ballast Lest de base Zavorra di base			Kräfte Reactions Pression d'angle Reazioni	
H	A			Rv	Ro
36 m	24	2,0 t	48 t	34,3 t	5,4 t
31 m	18	2,0 t	36 t	29,1 t	4,5 t
28 m	16	2,0 t	32 t	26,9 t	4,2 t
23 m	12	2,0 t	24 t	23,1 t	3,6 t
20 m	10	2,0 t	20 t	21,1 t	3,3 t

Standorte Schweiz:

Conducta AG
Stegackerstrasse 6
CH-8409 Winterthur
Telefon +41 (0)52 234 51 51
info@conducta.ch

Conducta AG
Riedbachstrasse 21 2
CH-3020 Bern
Telefon +41 (0)31 858 51 00
bern@conducta.ch

Conducta SA
Ch. de la Clopette 30
CH-1040 Echallens
Téléphone +41 (0)21 886 34 00
contact@conducta.ch

Conducta AG
Industriestrasse 4
CH-7203 Trimmis
Telefon +41 (0)81 322 53 33
trimmis@conducta.ch

Werner Fercher AG
CH-Lalden VS
Telefon +41 (0)27 946 40 21

Weitere Standorte finden Sie unter: www.conducta.ch

Standort Deutschland:

Conducta GmbH
Breitenbachstrasse 1
D-82538 Geretsried 1
Telefon +49 (0)81 71 2196-0
info@conducta.de

Standort Italien:

Conducta S.R.L.
Macchine Edili
Via Liguria 11
I-36015 Schio (VI)
Telefono +39 (0)445 576 229